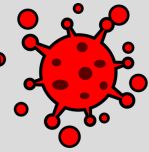


 **Understanding Long**   
**COVID**

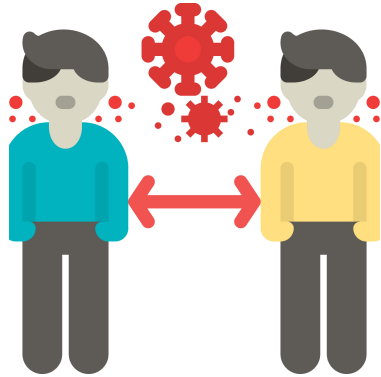
**#NYDISHEALTHEQUITY**



# What is Long COVID?



Long COVID is a **multi-system disease**



**Post COVID-19** conditions carrying on for over 12 weeks

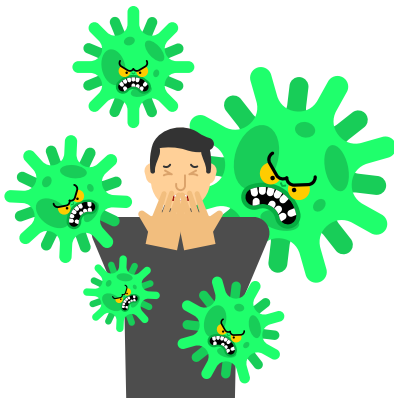
16 weeks post COVID



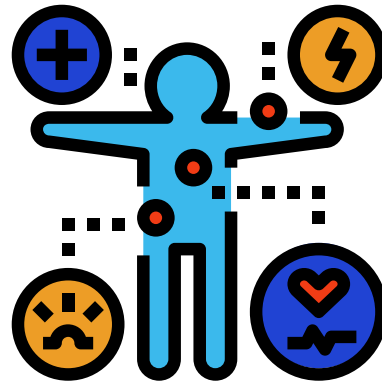
It may lead to **chronic hospitalization**



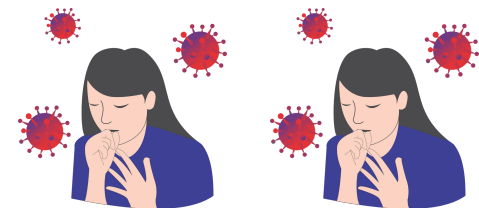
It might look like a **persistent virus**



**Symptoms** can be similar to other illnesses.



**Long COVID** can last months or even years



Month 6

Year 2

#NYDISHEALTHEQUITY

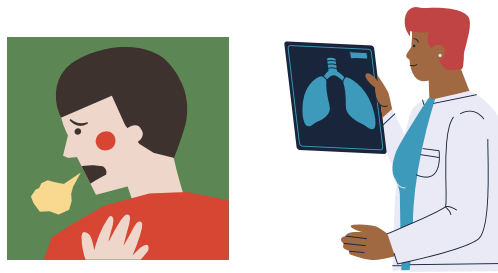


# Long Covid Symptoms

Trouble concentrating, headaches, and sleep problems



Respiratory symptoms, such as trouble breathing



Digestive symptoms such as diarrhea and stomach pain



Heart symptoms, such as chest pain



Joint or muscle pain



Anxiety or depression



#NYDISHEALTHEQUITY



# Who Is Vulnerable to Long COVID?



Those with pre-existing health conditions



The elderly



Pregnant mothers



Unsheltered communities



Nonliterate communities



Those who are lacking support



#NYDISHEALTHEQUITY



# Why is it hard to get Long COVID care?

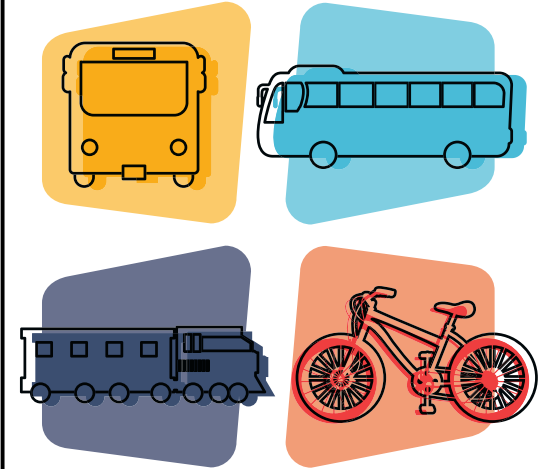
Lack of healthcare coverage



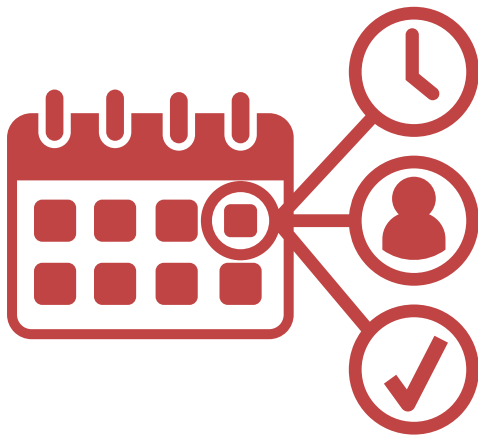
Language barriers



Hard to get to the doctors



No appointment availability



Fear of doctors



Can be hard to diagnose

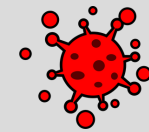


#NYDISHEALTHEQUITY





# Long COVID clinics in NYC



## Manhattan



### *New York Presbyterian*

**Location:** 425 E. 61st St. 11th Floor (post ICU) / Fourth Floor (pulm), New York, NY 10065  
**Contact:** 646-962-2333

## The Bronx



### *Montefiore Health System*

**Location:** Medical Arts Pavilion 3400 Bainbridge Ave. Second Fl., Bronx, NY 10467  
**Contact:** 844-556-6683 Ext. #36

## Brooklyn



### *Malmonides Medical Center*

**Location:** 949 48th St., Brooklyn, NY 11219  
**Contact:** 718-283-1244

### *Mount Sinai Health*

**Location:** Mount Sinai-Union Square 10 Union Square East New York, NY 10003  
**Contact:** 212-844-6300



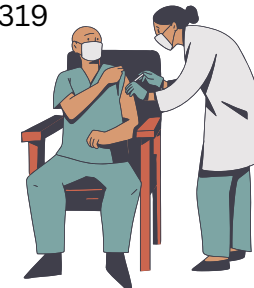
### *NYC Health + Hospital*

**Location:** 1920 Webster Ave., Bronx, NY 10457  
**Contact:** 844-692-4692 or 212-268-4319



### *NYC Health + Hospital*

**Location:** 815 Broadway Brooklyn, NY 11206  
**Contact:** 844-692-4692 or 212-268-4319



#NYDISHEALTHEQUITY